

Westmoreland Tandem Trailer Facility

NYS Thruway Exit 32

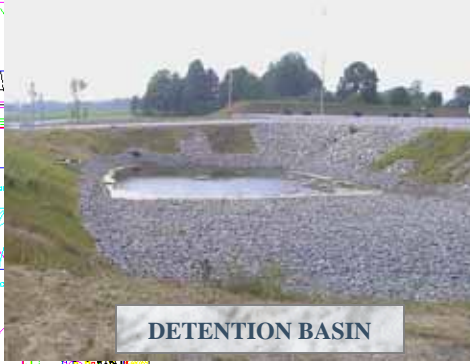
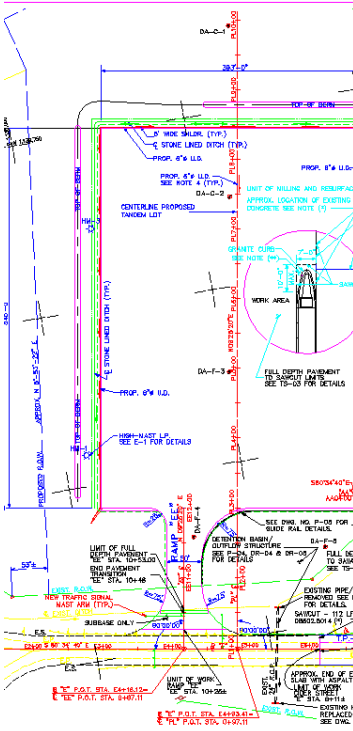
WESTMORELAND, NEW YORK



PROJECT DESCRIPTION:

This project involved the design of a truck tandem facility for the New York State Thruway Authority, consisting of a 5 acre tandem parking lot, toll plaza and Park-n-Ride expansion. The design included the tandem lot layout, design of access ramps, toll lane and canopy extensions. Drainage design also provided for a detention pond and an integral oil/water separator. The project also included the analysis and design of an actuated interconnected signal system.

BRYANT'S SCOPE: Bryant performed the survey and base mapping, tandem lot and ramp design, Park-n-Ride expansion, and the signalization design. The development of Right-of-way maps was also required.



DETENTION BASIN



VISUAL BERM



COMPLETED TANDEM FACILITY

Owner/Client

NEW YORK STATE THRUWAY AUTHORITY



Construction Cost

\$2,300,000

Scope

Civil Engineering

- Roadway Alignment (Horizontal & Vertical)
- Roadway Rehabilitation
- Storm Drainage
- Retention Pond & Stormwater Outfall
- Traffic Signal Design (Interconnected)
- Parking Facility Design
- SPEDES Permitting
- Toll Plaza Utilities
- Toll Plaza Slab Repair
- Park & Ride Expansion

Structural Engineering

- Toll Plaza Expansion

Surveying

- Topographic Survey with 50 foot Cross Sections
- Property Line Survey